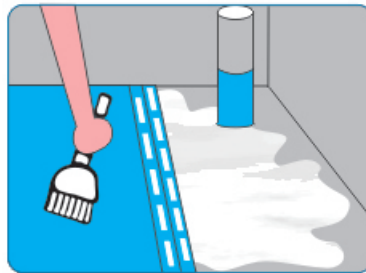


## CEMENTITIOUS FLEXIBLE WATERPROOFING MEMBRANE, TWO COMPONENTS

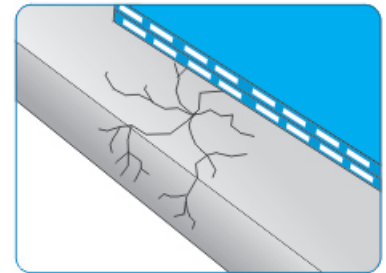
### DESCRIPTION

**SMARTFLEX** is a liquid - applied waterproofing membrane. It is a unique blend of special cement polymer and fine quartz. **SMARTFLEX** is supplied in two component sets. When mixed, the two components form an easy - to - apply slurry. The **SMARTFLEX** slurry dries to form a flexible waterproofing membrane. This membrane can bridge cracks and is firmly bonded to the substrate. **SMARTFLEX** is non - toxic and is specially suited for damp surfaces. **SMARTFLEX** a superior formulation with high polymer content. This product has good elongation and bond strength capabilities and is suitable for a wide range of water-retaining / water-excluding structures. Typically used for swimming pools, basement walls, roofs, water tanks, etc.

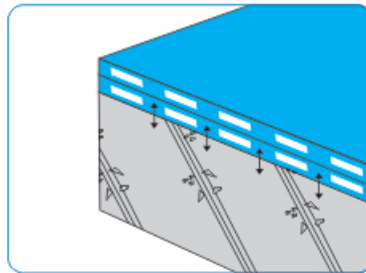
### FEATURES



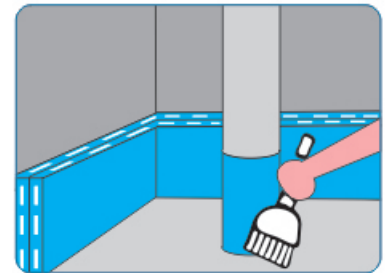
**DAMP SURFACES**  
**SMARTFLEX** is a cement-based product and is specially suited for application on wet or damp surfaces.



**CRACK-BRIDGING**  
**SMARTFLEX** is highly elastic and can be bridge cracks up to 1.0mm width.



**GOOD BONDING**  
**SMARTFLEX** has high substrate adhesion



**FLEXIBLE**  
**SMARTFLEX** is flexible and easy to apply in corners and uneven surfaces.



**NON-TOXIC**  
**SMARTFLEX** is a water-based product which is odorless and non - toxic. It is most suitable for application in confined areas.



**WATER POTABILITY**  
**SMARTFLEX** has been tested and certified suitable for use in contact with potable water.



TECHNICAL DATA	SMARTFLEX - M	SMARTFLEX	SMARTFLEX Super
Substrate adhesion	1.6 N / mm <sup>2</sup>	1.2 N / mm <sup>2</sup>	0.8 N / mm <sup>2</sup>
Crack-bridging	Up to 0.5 mm	Up to 1.0mm	Up to 2.0 mm
Tensile Strength	3.0 N / mm <sup>2</sup>	2.5 N / mm <sup>2</sup>	1.8 N / mm <sup>2</sup>
Elongation at Break	50%	100%	200%
Pot Life	35 - 120 min after mixing		

## PACKAGING & COVERAGE

PRODUCTS TYPES	COVERAGE	WEIGHT (Part A -Liquid (milky) / Part B -Powder)							
		Package 1 / (set)		Package 2 / (set)		Package 3 / (set)		Package 4 / (set)	
		Milky	Powder	Milky	Powder	Milky	Powder	Milky	Powder
SMARTFLEX - M	1.5kg / m <sup>2</sup> (per 2 coats)	1.0 kg	2.5 kg	2.0 kg	5.0 kg	5.0 kg	12.5 kg	10.0 kg	25.0 kg
SMARTFLEX		1.0 kg	2.0 kg	2.0 kg	4.0 kg	5.0 kg	10.0 kg	10.0 kg	20.0 kg
SMARTFLEX - S		1.0 kg	1.5 kg	2.0 kg	3.0 kg	5.0 kg	7.5 kg	10.0 kg	15.0 kg

## USES

SMARTFLEX can be used for waterproofing a wide range of structures including:

- Basement walls
- Kitchens
- Water tanks / Sum pit
- Planter boxes
- Roofs / Gutter
- Toilets / Wet areas
- Swimming pools
- Balconies
- Lift pits
- Environmental decks

## DIRECTIONS FOR USE

### SUBSTRATE PREPARATION

All concrete substrate must be clean, sound and free of contaminants such as oil, grease, dust, laitance and other contaminants. Porous surfaces should be removed and properly treated. All substrates must be pre-saturated with water prior to application. Do not allow ponding of water.

### MIXING INSTRUCTIONS

Pour part A (Liquid) into a container and stir/mix with a low speed drill fitted with a paddle. Pour part B (Powder) slowly into part A taking care to mix thoroughly with the drill soak to avoid lump formation. Mix until a slurry of even consistency is achieved. SMARTFLEX slurry can be diluted with water, up to 10%, prior application.

### APPLICATION

For horizontal surfaces, a squeegee, roller, brush or spray machine may be used to apply the slurry. For vertical, surfaces, a roller or brush may be used. Application must be made of at least 2 coats. For areas where hydrostatic pressure is anticipated, application must be done on the positive side of the structures to be waterproofed.

In case of higher quality, reinforcement of corner, floor & wall is requires.

### CURING AND PROTECTION

For areas where the membrane may be subjected to abrasion, tearing or external weathering, a screed must be used to protect the membrane.

For underground water tank, with 3 coats of SMARTFLEX protection mortar may be not required.

### PRECAUTIONS

Avoid strong direct sunlight during application. Use the material within the recommended pot life. All tools and equipment should be cleaned with water. Hardened SMARTFLEX can be scraped off with sharp tools or thinner.

