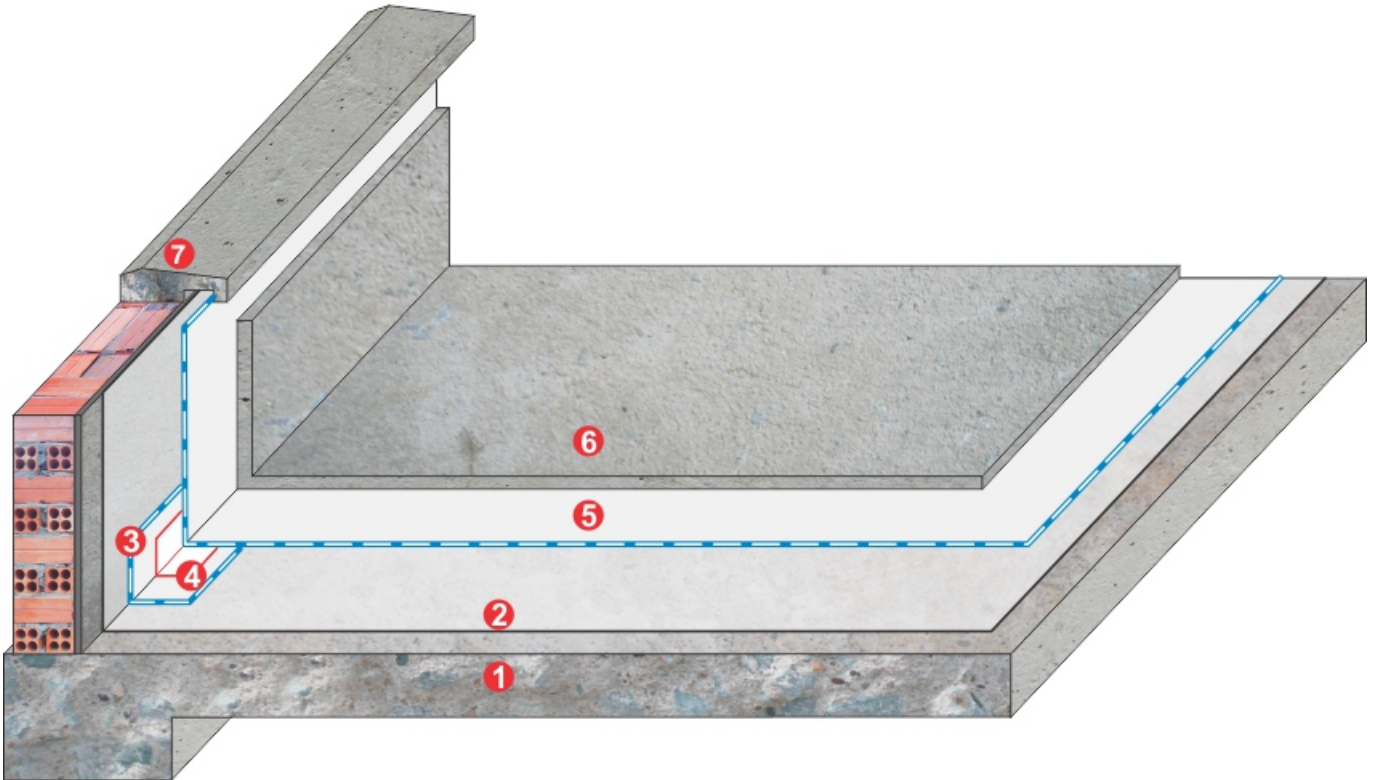




Product / sản phẩm:
FORMARK 629





WATERPROOFING TO FLOOR & WALL

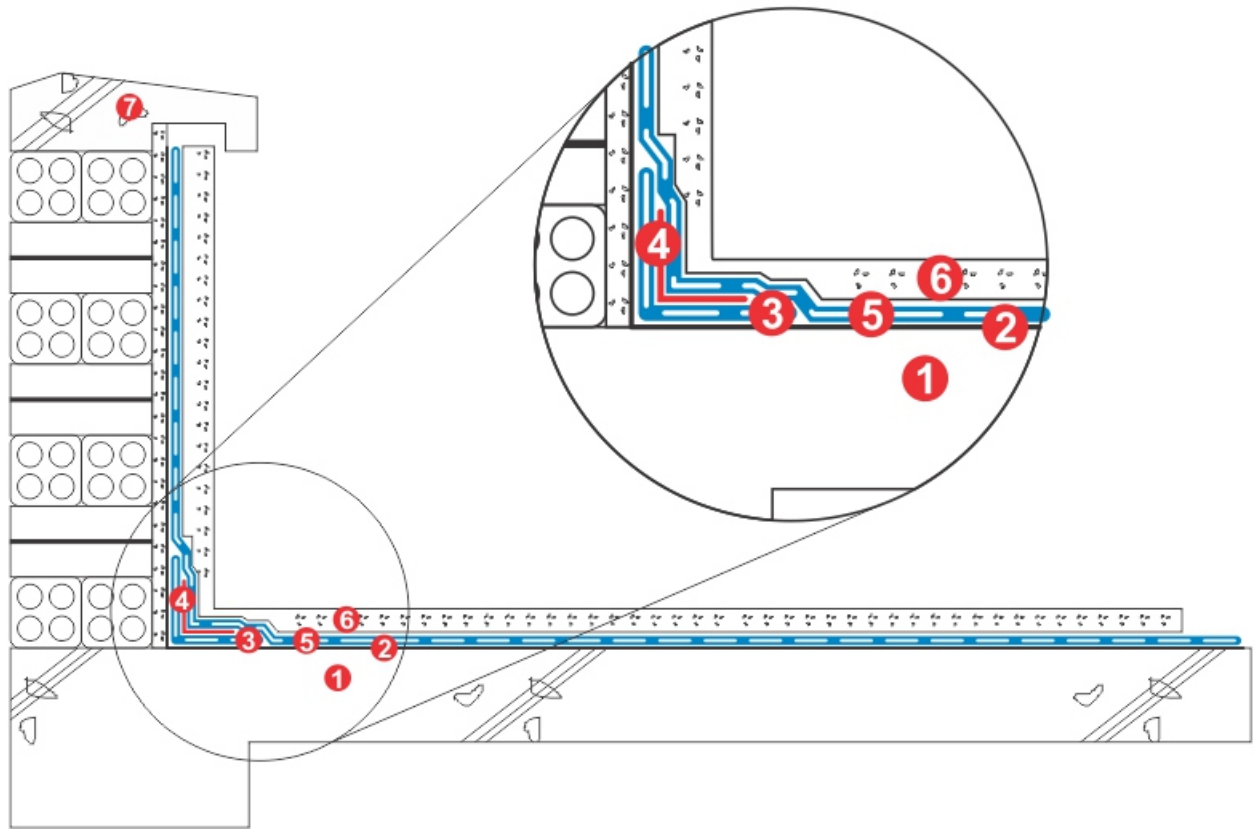
1. R.C. floor slab
2. Primer coat: **FORMARK 629 PRIMER**
3. Corner reinforcement: **FORMARK 629**
4. Polyester reinforcement mat
5. Waterproofing system: 2 coats of **FORMARK 629**
6. Protection screed.
7. Waterdrop Prevention

CHỐNG THẤM CHO SÀN & TƯỜNG

1. Đáy B.T.C.T.
2. Lớp lót: **FORMARK 629 PRIMER**
3. Gia cố góc chân tường: **FORMARK 629**
4. Lưới gia cố polyester
5. Hệ thống chống thấm: 2 lớp **FORMARK 629**
6. Vữa bảo vệ
7. Gờ chắn nước mưa



TYPICAL SPECIFICATION - QUY TRÌNH KỸ THUẬT



WATERPROOFING SOLUTION OF / GIẢI PHÁP CHỐNG THÂM CHO TERRACE & ROOF SÂN THƯỢNG & MÁI

Project:

Shop Drwg

Manufacture & Supplier by:

Design & installation by:



WATERPROOFING TO FLOOR & WALL

1. R.C. floor slab
2. Primer coat: **FORMARK 629 PRIMER**
3. Corner reinforcement: **FORMARK 629**
4. Polyester reinforcement mat
5. Waterproofing system: 2 coats of **FORMARK 629**
6. Protection screed
7. Waterdrop Prevention

